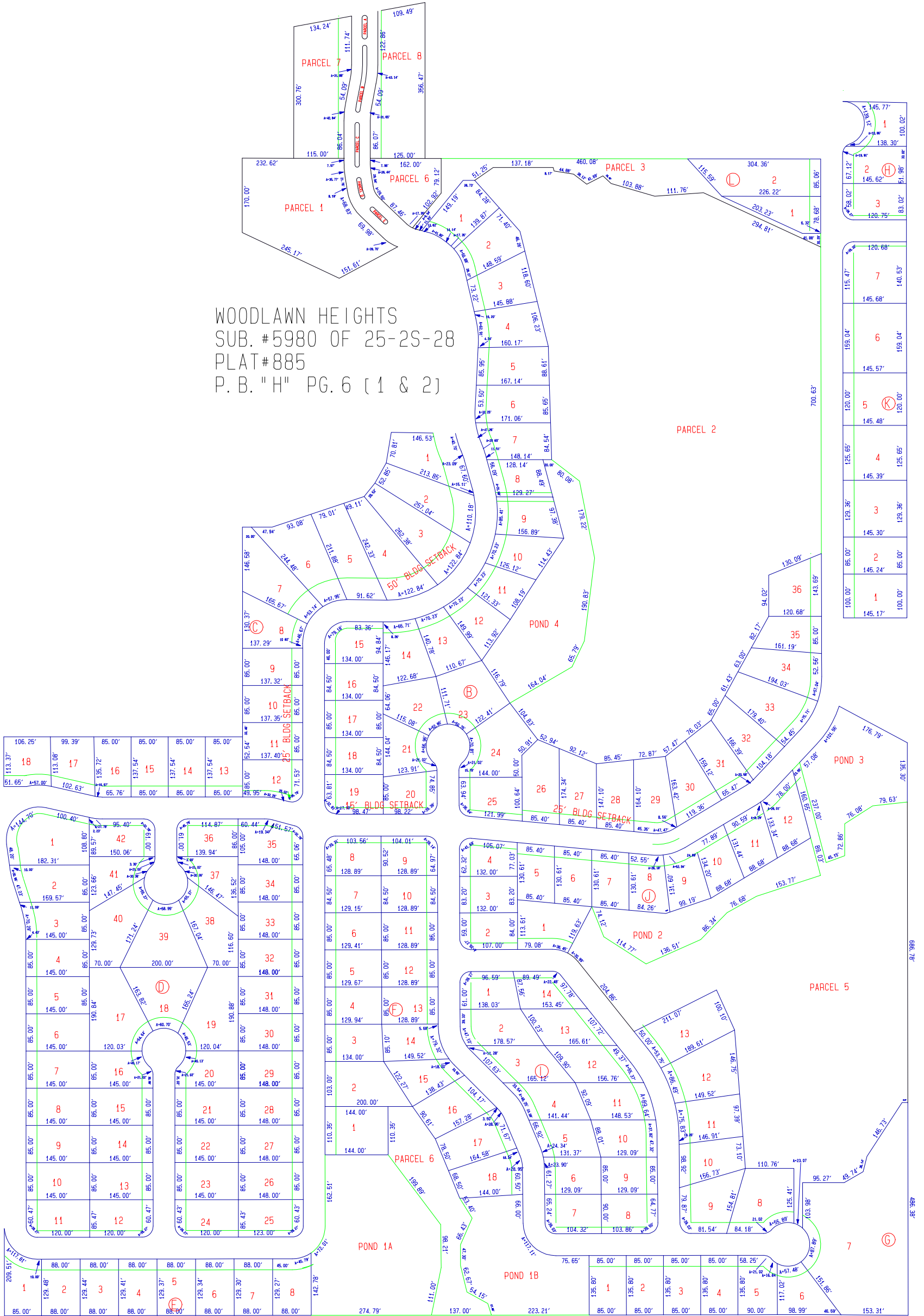


WOODLAWN HEIGHTS
 SUB. #5980 OF 25-2S-28
 PLAT#885
 P. B. "H" PG. 6 (1 & 2)



1	145.77'
2	138.30'
3	145.62'
4	120.75'
5	120.00'
6	145.57'
7	145.68'
8	120.00'
9	145.48'
10	120.00'
11	145.48'
12	120.00'
13	145.39'
14	120.00'
15	145.30'
16	145.24'
17	120.00'
18	145.17'

1	100.00'
2	145.24'
3	129.36'
4	125.65'
5	120.00'
6	159.04'
7	115.47'
8	140.53'
9	120.00'
10	120.00'
11	145.17'
12	100.00'
13	145.17'
14	100.00'
15	145.17'
16	100.00'
17	145.17'
18	100.00'
19	145.17'
20	100.00'
21	145.17'
22	100.00'
23	145.17'
24	100.00'
25	145.17'
26	100.00'
27	145.17'
28	100.00'
29	145.17'
30	100.00'
31	145.17'
32	100.00'
33	145.17'
34	100.00'
35	145.17'
36	100.00'
37	145.17'
38	100.00'
39	145.17'
40	100.00'
41	145.17'
42	100.00'